

PACS – Hospital Perspective

Barbara Krauter, RN, MS, CPHIMS
Seton Healthcare Network Clinical Informatics
Formerly ARA RIS/PACS Project Leader

In the beginning . . .
Opportunity for proof of
concept

- Daughters of Charity PACS Task Force 1998
- Seton Network included radiologist partners
- 2 Arcon sites purchased by Seton had never printed film
- Close ties between hospital and radiological group

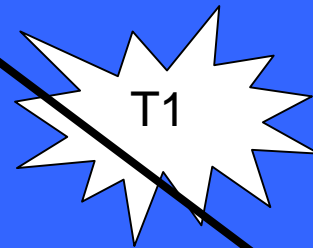
Proof of Concept



US – GE Logic/Merge MVP

CT – GE Sytec2000/Merge

CR – Fuji AC3



First PACS Austin area

ARA, Seton, Marconi



New hospital – PACS model

Seton Southwest



First ER

Need for local support



Rural Settings



Seton Highland Lakes
Burnet, TX



Fuji (Dell) workstations

Radiology Reading Rm 1MP/3MP

ER, Pt Care Areas 1MP Color

CT – GE/Merge

US – GE/Acuson

CR – Fuji “Smart”

Printer – Fuji Dry Pix /Kodak

Digitizer – Lumisys 75, upgraded

Seton Mini PACS



Seton Highland Lakes



Seton Cedar Park



ARA Data Center



Seton Pflugerville



Seton Southwest

Images from these Seton sites archived at ARA Data Center. Can be viewed at any time, by multiple persons from all ARA workstations, all hospitals, clinics, doctors' offices, homes.

Neonatal Intensive Care Units

- Neonatology Center at Seton
- CHOA patients – Brackenridge Campus
- Pedi Radiologists at Children's Hospital
 - **Delay in reading**
 - **Double films**
 - **Cost of courier service**
 - **Quick read wasn't a specialty read**

NICU's Today

- Reading stations for neonatologists, neonatal nurses & RTs
- CR in close proximity to babies
- Specialty pedi reads 24/7
- Retake rate down, lower exposure
- Permanent storage in ARA Archive
- No film!

Three Domains

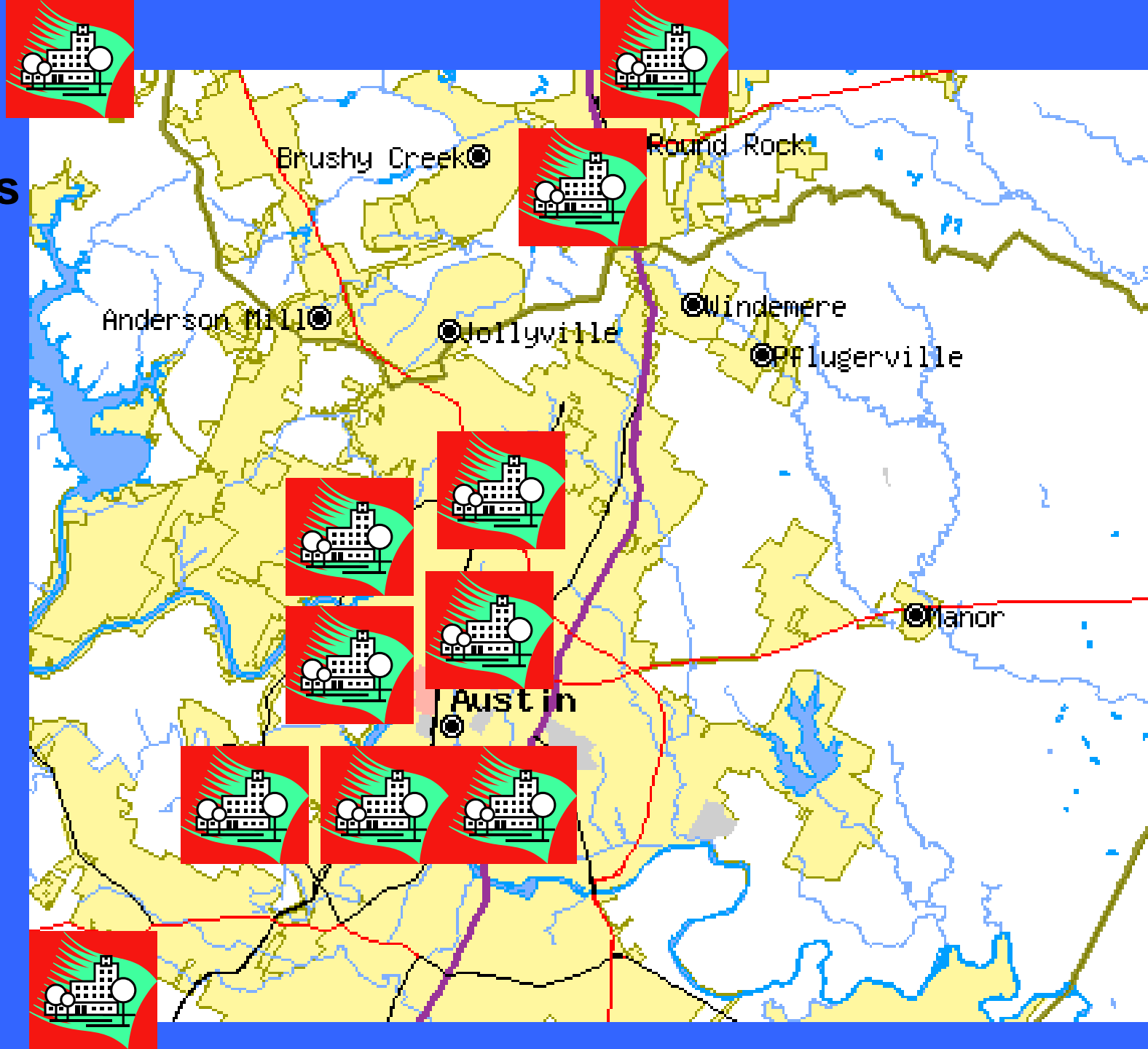
- Seton PACS (“Mini PACS”)
- Telerad System (Hospitals)
- ARA PACS (Outpatient Clinics)

**After Hours
Coverage**

**Aging
Telerad
System**

**Too few
rads to
cover all**

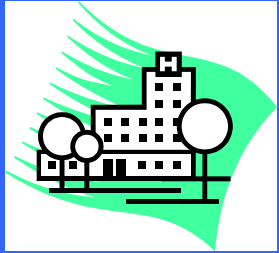
**Need for
specialty
reading**



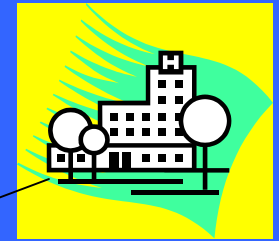
South Austin Hospital

Telerad (Hospital) Sites

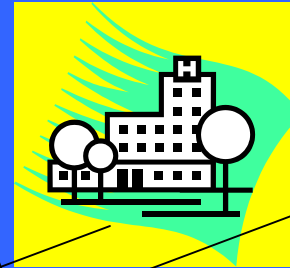
Brackenridge



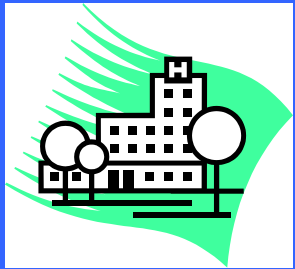
Seton Medical Center



ARA Data Center



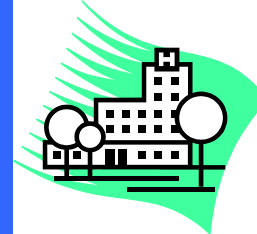
St. David's Hospital



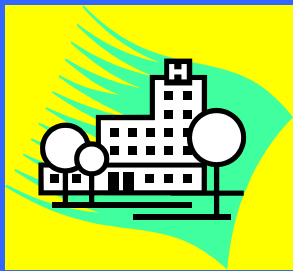
Georgetown Hospital



North Austin Medical Center

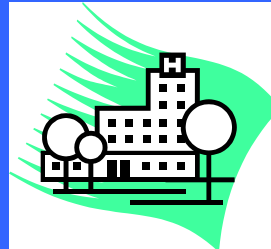


Seton Northwest Hospital

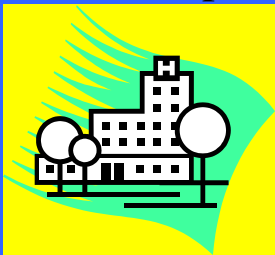


Images from multiple hospitals read by ARA rads from MPT (clinics, home).

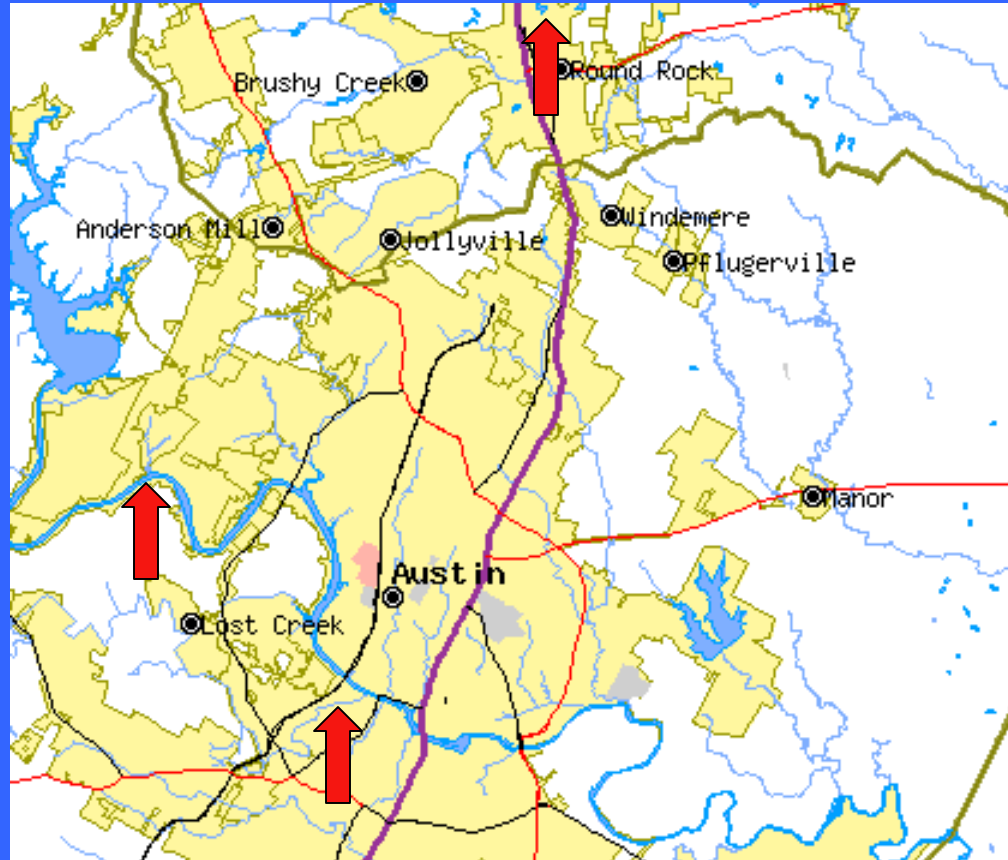
Round Rock Hospital



Children's Hospital of Austin



Demonstrating the power of PACS





Seton Medical Center



Brackenridge Hospital

NICU – CR, US, Wk Sta	NICU – CR, US, Wk Sta
ED	ED/Trauma
Surgery (in progress)	Surgery (Neuro)
Rad Reading Room*	Rad Reading Room
CT, MR, US	CT, MR, US

OR Design Challenges



Telerad Challenges

- Multiple modality vendors – none had connected to PACS before
- You want me to connect hospitals' modalities & you want hospitals' techs to support them?!
- Not a RIS among them!

Working Together . . .



- Hospital's modality
- ARA's network, archive & DICOM Print network
- Hospital's staff – You don't "own" them and you can't force them to do anything
- Vendor factor

Celebrating Success TIF Grant



**ARA and Seton
celebrate results of
collaborative effort.**



TIF Grant (Teleradiology)

- Targets rural, under-served populations
- Non-profit hospitals
- Matching funds
- Public partner



Children's Hospital of Austin

Fuji Reading Workstations

CT – Siemens Vol. Zoom

US – Acuson

X-ray – still film (CR planned)

MR – GE 1.5 T

NM - ADAC

Digitizer – Lumisys 75, upgraded

Print Network – AGFA/Kodak

**New Children's
Hospital of Central
Texas will be
completely PACS.**

CT – GE High Speed

US – ATL & Acuson

CR – Fuji Smart & 5000

NM – Siemens ECam

Workstations - Fuji (Dell)

Digitizer - Lumisys 75

Printer - Kodak



Seton Northwest Hospital/Plaza

**Goal: Filmless by
end of May 2004**

Filmless now!

WIFM?

- Modalities already connected
- Techs trained – NO learning curve
- Vendors “trained” to support their modalities on PACS
- Network issues managed by ARA
- DICOM Print Network established
- Exposure of referring docs to PACS via consultation w/rads, ready buy-in
- Community advantage – entire region on same PACS, regardless of imaging site – good for patients!

Helping hospitals get into PACS

- Go to PACS in steps
- Look for early wins (NICU, rural)
- Operationalize the expenses
- Grants
- Creative Partnerships

Collaborative solutions
work when no one says
“It’s not my problem!”

